

BERENBERG WEALTH AND ASSET MANAGEMENT

IMPACT REPORT

BERENBERG SUSTAINABLE WORLD EQUITIES

September 2023





Disclaimer

This information is a marketing communication. This information and references to issuers, financial instruments or financial products do not constitute an investment strategy recommendation pursuant to Article 3 (1) No. 34 Regulation (EU) No 596/2014 on market abuse (market abuse regulation) nor an investment recommendations pursuant to Article 3 (1) No. 35 Regulation (EU) No 596/2014, both provisions in connection with section 85 (1) of the German Securities Trading Act (WpHG). As a marketing communication this document does not meet all legal requirements to warrant the objectivity of investment recommendations and investment strategy recommendations and is not subject to the ban on trading prior to the publication of investment recommendations and investment strategy recommendations. This document is intended to give you an opportunity to form your own view of an investment. However, it does not replace a legal, tax or individual financial advice. Your investment objectives and your personal and financial circumstances were not taken into account. We therefore expressly point out that this information does not constitute individual investment advice. Any products or securities described may not be available for purchase in all countries or only in certain investor categories. This information may only be distributed within the framework of applicable law and in particular not to citizens of the USA or persons resident in the USA. The statements made herein have not been audited by any external party, particularly not by an independent auditing firm. Any future returns on fund investments may be subject to taxation, which depends on the personal situation of the investor and may change in the future. Returns on investments in foreign currencies may increase or decrease due to currency fluctuations. The purchase, holding, conversion or sale of a financial instrument, as well as the use or termination of an investment service, may give rise to costs that affect the expected income. In the case of investment funds, you should always make an investment decision on the basis of the sales documents (key investor document, presentation of past performance, sales prospectus, current annual, if applicable, semi-annual report), which contain detailed information on the opportunities and risks of the relevant fund. In the case of securities for which a securities prospectus is available, investment decisions should always be made on the basis of the securities prospectus, which contains detailed information on the opportunities and risks of this financial instrument, otherwise at least on the basis of the product information document. An investment decision should be based on all characteristics of the fund and not just on the sustainability-related aspects. All the aforementioned documents can be obtained from Joh. Berenberg, Gossler & Co. KG (Berenberg), Neuer Jungfernstieg 20, 20354 Hamburg, Germany, free of charge. The fund sales documents and the product information sheets for other securities are available via a download portal using the password »berenberg« at the Internet address <https://docman.vwd.com/portal/berenberg/index.html>. The sales documents of the funds can also be requested from the respective investment management company. We will be pleased to provide you with the specific address details upon request. A fund investment involves the purchase of shares in an investment fund, but not a specific underlying asset (e.g. shares in a company) held by that fund. The statements contained in this document are based either on own company sources or on publicly accessible third-party sources, and reflect the status of information as of the date of preparation of the presentation stated below. Subsequent changes cannot be taken into account in this document. The information given can become incorrect due to the passage of time and/or as a result of legal, political, economic or other changes. We do not assume responsibility to indicate such changes and/or to publish an updated document. For important disclosures and information on index- and market data, see <https://www.berenberg.de/en/legal-notice/license-notice/>. Past performance, simulations and forecasts are not a reliable indicator of future performance and custody fees may occur which can reduce overall performance. Please refer to the online glossary at www.berenberg.de/glossar for definitions of the technical terms used in this document. For investors in Switzerland: The fund's domicile is Luxembourg. The fund is qualified for distribution to non-qualified investors in Switzerland. The paying agent in Switzerland is Telco AG, Bahnhofstrasse 4, CH-6430 Schwyz and the representative is 1741 Fund Solutions AG, Burggraben 16, 9000 St. Gallen, Switzerland. The prospectus including the general and specific terms, the key investor information document (KIID) as well as the annual and semi-annual report of the fund may be obtained free of charge and in German language from the aforementioned representative (Phone +41 58 458 48 00). For shares distributed in or from Switzerland place of execution and jurisdiction is at the representative's registered office. Date 13.09.2023

On MSCI ESG Research: Although Joh. Berenberg, Gossler & Co. KG's information providers, including without limitation, MSCI ESG Research LLC and its affiliates (the "ESG Parties"), obtain information (the "Information") from sources they consider reliable, none of the ESG Parties warrants or guarantees the originality, accuracy and/or completeness, of any data herein and expressly disclaim all express or implied warranties, including those of merchantability and fitness for a particular purpose. The Information may only be used for your internal use, may not be reproduced or disseminated in any form and may not be used as a basis for, or a component of, any financial instruments or products or indices. Further, none of the Information can in and of itself be used to determine which securities to buy or sell or when to buy or sell them. None of the ESG Parties shall have any liability for any errors or omissions in connection with any data herein, or any liability for any direct, indirect, special, punitive, consequential or any other damages (including lost profits) even if notified of the possibility of such damages.



Berenberg

Established in 1590, today Berenberg is one of the leading private banks and one of the most dynamic banks in Europe. Our business is based on client focus, responsibility, first-class knowledge and solution-orientated thinking. Our Wealth Management, Asset Management, Investment Banking and Corporate Banking divisions offer solutions for private and institutional investors, companies and organisations.

CONTACT:

Sabrina Bendel
Wealth and Asset Management
Joh. Berenberg, Gossler & Co. KG
Sabrina.Bendel@berenberg.com



Contents

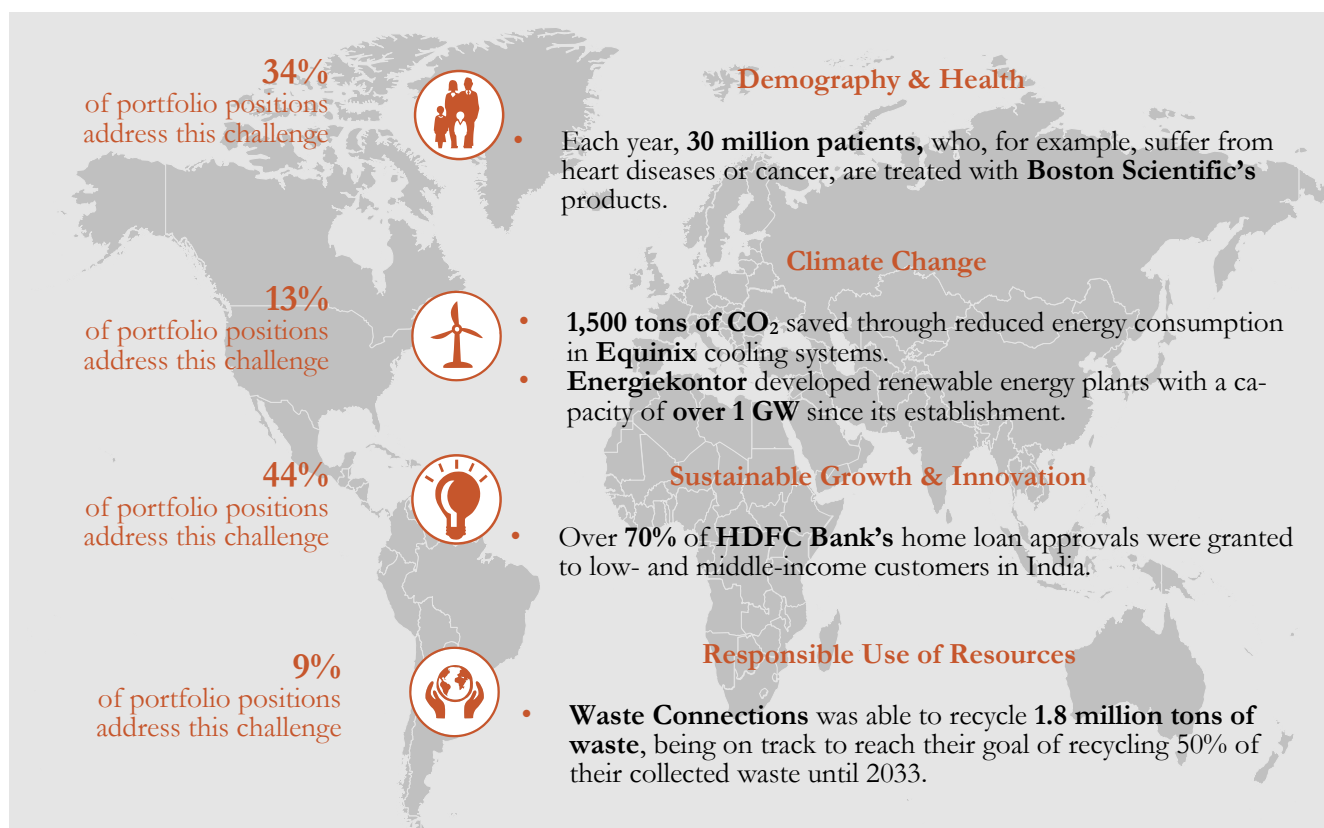
Impact Spotlights	1
Impact at Berenberg — An Introduction	3
<i>The Baseline: ESG Integration</i>	<i>3</i>
<i>Inducing Positive Change through Active Ownership</i>	<i>3</i>
<i>Adding a Focus on Impact: Our Approach to Positive Selection</i>	<i>3</i>
<i>Navigating the Challenges of the Current Impact Landscape</i>	<i>5</i>
Berenberg Net Impact Model — Our Methodology	6
Demography & Health.....	8
<i>The challenge of Demography & Health</i>	<i>8</i>
<i>Contributing to the Solution — Our Portfolio Holdings</i>	<i>8</i>
<i>A Case Study — Boston Scientific</i>	<i>8</i>
Climate Change.....	9
<i>The Challenge of Climate Change</i>	<i>9</i>
<i>Adding to the Solution — Our Portfolio Holdings</i>	<i>10</i>
<i>A Case Study — OX2.....</i>	<i>11</i>
Sustainable Growth & Innovation	11
<i>The Challenge of Sustainable Growth and Innovation</i>	<i>12</i>
<i>Contributing to the Solution — Our Portfolio Holdings</i>	<i>12</i>
<i>A Case Study — HDFC Bank.....</i>	<i>12</i>
Responsible Use of Resources	13
<i>The challenge of a Responsible Use of Resources.....</i>	<i>13</i>
<i>Contributing to the Solution — Our Portfolio Holdings</i>	<i>14</i>
<i>A Case Study — Epiroc.....</i>	<i>14</i>
The Sustainable Development Goals (SDGs)	15
Additional ESG and Impact-Related Information	19
Progress and Outlook.....	23
Appendix	24



Impact Spotlights¹

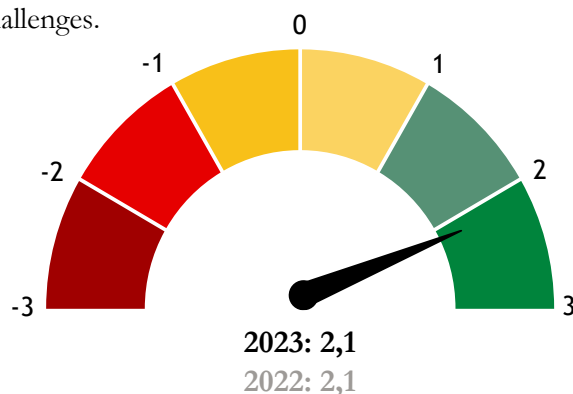
The Four Global Challenges

Through its products or services, every portfolio position contributes to the solution of one of the four defined global challenges within our impact framework.



The Net Impact Score²

Through the application Berenberg Net Impact Model, we obtain a Net Impact Score at the portfolio level, which can range from -3 to 3. A score higher than 0 indicates a net positive impact in relation to the four defined global challenges.

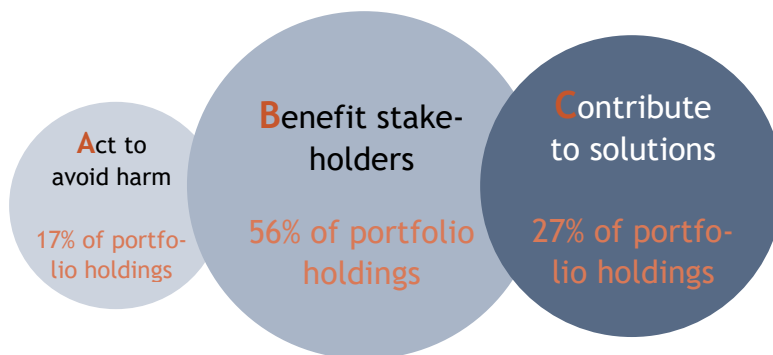


¹ The Berenberg Net Impact Model is applied to the portfolio as of 31 March 2023. All calculations and graphic representations are our own.

² We showcase the comparison between the Net Impact Scores as of the portfolios from 31 March 2023 and 31 March 2022.

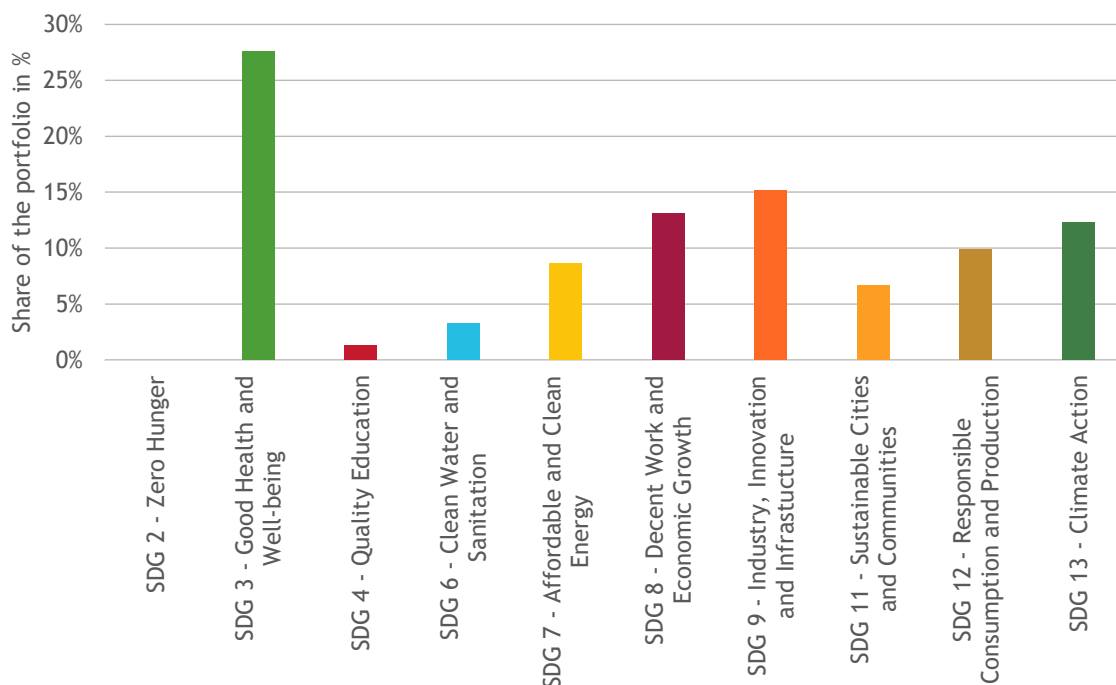
The ABC Model

Within the classification scheme of the ABC model by the Impact Management Project (IMP)³, we evaluate the criticality of companies' or issuers' solutions and classify them into the categories “Act to avoid harm” (A), “Benefit stakeholders” (B) and “Contribute to solutions” (C), with C being the category generating the strongest impact.



The Sustainable Development Goals (SDGs)

We map our portfolio holdings according to their contribution to 10 of the most investible Sustainable Development Goals by the United Nations. More information on the SDGs can be found in the dedicated SDG chapter.



³ See “IMP – A Guide to Classifying the Impact of an Investment”, available at <https://impactfrontiers.org/norms/abc-of-enterprise-impact/>.

Impact at Berenberg – An Introduction

At Berenberg Wealth and Asset Management, the funds in our category “*Impact focused*” apply a holistic approach to sustainability, and we combine several ESG instruments to provide a sound approach to impact⁴. We integrate ESG aspects in our investment process through exclusions, analysis and active ownership activities such as engagement. As an additional step exclusive to the funds in our “*Impact focused*” category, we apply positive selection as part of our impact framework.

The Baseline: ESG Integration

As a solid foundation, the funds in our category “*Impact focused*” use ESG integration tools such as exclusions, screening and ESG analysis. Generally, we recognise that the integration of ESG helps our portfolio management to adequately analyse risks and returns. We incorporate ESG criteria by analysing ESG risks and opportunities using our own research and third-party providers. The open dialogue between our investment and ESG professionals allows us to integrate their industry experience and knowledge into our ESG approach and to develop and strengthen it continuously. In addition to our general ESG exclusions, which apply to the Berenberg Wealth and Asset Management product platform⁵, the *Impact focused* investment funds apply additional exclusion criteria in order to further mitigate the risk of potential adverse effects and to avoid clear negative impact investments.

Inducing Positive Change through Active Ownership

Active ownership activities such as direct company engagement are part and parcel of our ESG and impact-focused approach and key tools in understanding company behaviour when it comes to sustainability issues. Having an open dialogue with companies and other issuers encourages transparency and allows us to gain better insights. We regularly engage with companies and consistently monitor our engagement results. Through our engagement, we are not only able to make investment decisions in regards whether we buy, sell or hold – as an active investor, we also help to improve the sustainability profile of companies in the long term and reduce risks. We believe that our active ownership approach can create positive change in the issuer or company and can, ultimately, benefit society or the environment and help to overcome global challenges.⁶

Adding a Focus on Impact: Our Approach to Positive Selection

⁴ For further information on our internal ESG categories please refer to our Berenberg WAM ESG Policy and our website www.berenberg.de/en/esg-publications.

⁵ Further information on the application scope of our exclusions can be found in our publicly available Berenberg WAM Exclusion Policy, available at www.berenberg.de/en/esg-publications.

⁶ For more information, see our Engagement Policy as well as our Active Ownership Report, available at www.berenberg.de/en/esg-publications.

For the funds of our category “*Impact focused*”, we apply an additional impact framework, which consists of targeting specified global challenges with our investments as well as a proprietary impact measurement and analysis tool. We use this impact approach to exclusively invest in portfolio holdings that generate a measurable positive impact on the environment and/or society through their products and services.

Our impact approach has developed over time, reflecting our long-standing experience within this segment. Apart from continuously monitoring ongoing market developments, we conduct our own studies and compose white papers on relevant ESG- and impact-related topics, which has helped to form our approach and confirmed our impact-related perspectives. We strive to further evolve our approach and do not shy away from challenging our views.

Confirmed by the findings of our survey from 2018⁷ and its updates from 2021⁸ and 2022⁹, we identified the SDGs that are investible as well as important. Based on these findings, we developed a set of four key global challenges, which are at the heart of our impact framework:

- ❖ Demography & Health;
- ❖ Climate Change;
- ❖ Sustainable Growth & Innovation; and
- ❖ Responsible Use of Resources

Every portfolio holding in our impact-focused investment funds undergoes in-depth impact analysis, within which we assess the portfolio holdings’ contributions to the respective challenges. We also map them to the Sustainable Development Goals based on their contribution.

A further aspect within our impact-related framework is our proprietary Berenberg Net Impact Model, in which we holistically analyse and assess the positive as well as potentially negative impact of our portfolio holdings. We discuss the details of the methodology in the next chapter.

This report entails information on our approach to impact as well as portfolio-related information for the Berenberg Sustainable World Equities fund, a global equity fund that was launched in 2018.

⁷ See Berenberg Wealth & Asset Management Study “Understanding the SDGs in Sustainable Investing”, available at www.berenberg.de/en/esg-publications

⁸ See Berenberg Wealth & Asset Management Study “Berenberg ESG Survey: Exploring investor sentiment”, available at www.berenberg.de/en/esg-publications

⁹ See Berenberg Wealth & Asset Management Study “Berenberg ESG Survey: SDG and Climate Investing – Exploring Investor Sentiment”, available at www.berenberg.de/en/esg-publications

Navigating the Challenges of the Current Impact Landscape

Over the last years there has been an intensifying discussion around the concept of “impact investing”, its definition and meaning, its standardization, its measurement as well as its effectiveness. The discussions have been fuelled, among other things, by regulatory initiatives such as the EU Sustainable Finance Disclosure Regulation (SFDR), which became effective in 2021. Although the SFDR is a disclosure regulation with the intention to increase transparency and comparability around sustainability consideration in financial products, it has, in market practice, been widely used as a label: Article 9 funds within the SFDR tend to be perceived as “dark green” or “impact products” and Article 8 funds tend to be perceived as “light green”, with potential implications for fund flows.¹⁰

This development has led to widespread confusion and criticism regarding inhomogeneous ambition levels among funds within the same SFDR article classification. Academics and industry associations have recently called for a more nuanced impact-related terminology to avoid misinterpretations¹¹. We value the stakeholder discussions that can, ultimately, lead to the strengthening of impact investing.

We see numerous questions. Where is the impact of impact investments actually generated? There are two ways to think about this: first, there is the impact of the investor on a company, e.g., the provision of capital and the influence exercised through active ownership activities. Second, there is the impact of the companies on society and the environment through their products and services. Usually, in public capital markets, impact refers to the second level. Once the definition of impact has been made, the next question arises: how to measure impact? Despite widespread discussions, a uniform standard is still lacking, also because impact measurement must fulfil many characteristics: impact should be considered holistically, the models should be comprehensible yet understandable, and the effort required should be in proportion to the added value offered by the information.

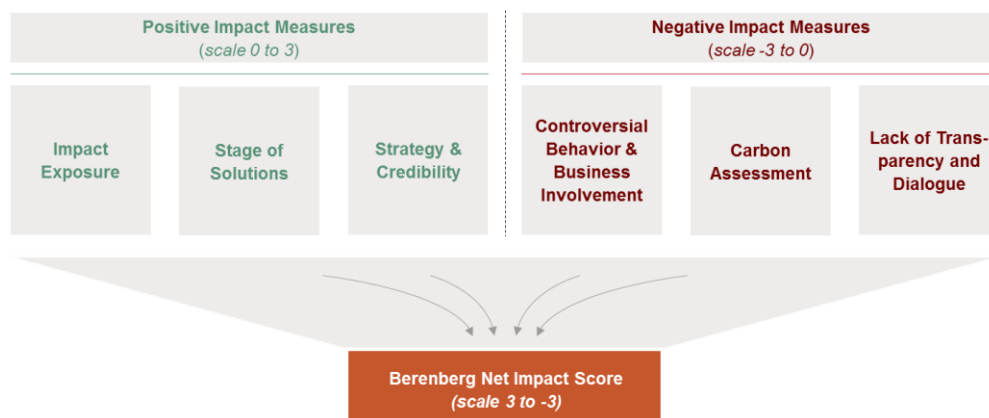
Albeit the lack of clarity, we want to continue to meet the challenges and contribute to the discussion with our approach, as we believe that a credible approach to impact can create substantial added value for clients. Due to ongoing and pending debates and regulatory clarifications, we chose to take a cautious approach. We believe that transparent communication on the opportunities and limits of impact investing in public capital markets is essential to avoid misleading or overpromising claims towards impact and may contribute to further developing the landscape. Within our internal categorization, we deliberately chose the classification “Impact focused”, to semantically distinguish from the traditional understanding of the term impact investing, which mostly referred to investments in specific social and/or environmental projects or social enterprises with limited access to capital.

¹⁰ See Busch (2023), “SFDR Article 9: Is It All About Impact?”

¹¹ See Busch et al (2022), “Classification Scheme for Sustainable Investments”

Berenberg Net Impact Model – Our Methodology

We use our proprietary Berenberg Net Impact Model to comprehensively quantify the positive and potentially negative impact that our portfolio holdings generate in relation to the four defined global challenges of Demography & Health, Climate Change, Sustainable Growth & Innovation and Responsible Use of Resources. We defined specific measures in the positive as well as the negative impact space, with which we aim to holistically capture the net impact of our portfolio holdings. For each holding, every impact measure is analysed individually and given a score, which is summed up at the issuer or company level and finally aggregated at the portfolio level. These scores are based on quantitative and qualitative measures.



The positive impact measures do not only capture the contribution of the business model to one of the four global challenges, but also consider the stage of impact as well as the company's strategy and credibility. In our view, this provides a more holistic and forward-looking view on a company's positive impact. Within specified assessment frameworks for each pillar, we award scores between 0 and 3.

- ❖ The pillar *Impact Exposure* quantifies the extent to which a portfolio holding addresses one of the four global challenges through its product and service offering. The measure relies on several financial metrics such as revenue exposure to one of the global challenges, as well as future-orientated financial metrics such as R&D spending, capex investments and sector-specific key performance indicators.
- ❖ The pillar *Stage of Solutions* integrates the ABC approach as defined by the Impact Management Project (IMP)¹². Here, we evaluate the criticality of companies' or issuers' solutions and classify them into the categories "Act to avoid harm" (A), "Benefit stakeholders" (B) and "Contribute to solutions" (C), with C being the category generating the strongest impact.
- ❖ On a company level, the pillar *Strategy & Credibility* considers the depth and ambition of sustainability-related commitments and targets as well as achieved

¹² See "IMP – A Guide to Classifying the Impact of an Investment", available at <https://impactmanagementproject.com/impact-management/how-enterprises-manage-impact/>

performance that underline the company's credibility. In a forward-looking way, this pillar seeks to capture how far companies have embedded their sustainability and impact-related efforts into their cultures, their DNA and overall business strategy. This measure relies on publicly available information regarding the company's sustainability key performance indicators.

Similarly, the negative impact measures capture aspects on the product level as well as the company's operational level. Here, we seek to quantify the negative externalities generated by the issuer or company. Within specified frameworks, we award scores between -3 and 0.

- ❖ In the pillar *Controversial Behaviour & Business Involvement* we analyse potentially existing controversial behaviour and conflicts as well as involvements in and exposure to controversial business sectors and activities. The measure relies on the data and analysis frameworks of two of our external ESG data providers, which are complemented with our own research as well as potential adjustments in case of productive engagement activities.
- ❖ The pillar *Carbon Assessment* quantifies and evaluates a company's CO₂ impact as well as possibly existing countermeasures such as carbon reduction initiatives. We rely on data from our external data provider and use publicly available company information. The specified framework for this measure accounts for benchmark comparisons and sector-specific CO₂ levels.
- ❖ The pillar *Lack of Transparency & Dialogue* assesses the overall level of company transparency regarding ESG and impact data as well as openness to dialogue in the context of engagement activities.

The result of the model application is a Net Impact Score in a range of -3 to 3, whereas a score higher than 0 indicates a net positive impact in relation to the four global challenges. The maximum Net Impact Score of 3 demonstrates a strong positive impact and no or sufficiently offset negative impact.

Comprehensive and valid data is crucial to our Berenberg Net Impact Model. We mainly rely on publications from portfolio holdings and data from our external ESG data providers. We additionally integrate information which we gather through our engagement activities, from sell-side research or other relevant sources.

For our assessments and scoring methodology, we specify clear scoring frameworks to arrive at objective and comprehensible scoring results. However, there remains a discretionary part within the model for which we, at this point, cannot establish specified and reasonable thresholds. We realise that this could be a potential shortcoming of the model, however, we also see benefits in establishing a methodology which is not entirely rigid and is thus able to reflect the unique opportunities or challenges in specific business models. We discuss our view on this and our envisioned outlook for future developments in the "Outlook" section.

Demography & Health

The challenge of Demography & Health



The United Nations' Sustainable Development Goal 3 aims at improving the life-long health and well-being of all people. Although major advances in medicine have been made over the past decades, inequality regarding the healthcare levels of different countries remains high, and new challenges arise as the global population becomes wealthier and lives longer. Similarly, the Goal of ending hunger and malnutrition (SDG 2) persists and its hurdles change throughout the decades.

The trend is clear: The World Health Organisation estimates that the share of people aged 60 years and older will rise from 12% in 2015 to 22% of the world's population in 2050.¹³ With it, typically age-related diseases such as cancer, dementia and cardiovascular diseases now represent the by far most common causes of death. Chronic diseases such as type 2 diabetes and hypertension, which are often lifestyle-related, are also on the rise.¹⁴ At the same time, medical treatments and innovations need to be distributed more equally. Regarding nutrition, the United Nations estimates that, in 2019, an estimated 2bn people did not have regular access to safe, nutritious and sufficient food.¹⁵

Contributing to the Solution – Our Portfolio Holdings

In the face of these challenges, there is a strong need for innovative solutions, which are of high quality but also affordable. Many companies have specialised in offering exactly that. For example, new technologies in the space of pharmaceuticals and data-driven solutions already contribute to a better understanding of diseases and allow for more accurate diagnoses as well as personalised and potentially less invasive treatments. Further, companies offering healthcare services and elderly care solutions are important facilitators to overcome challenges, as are companies focusing on healthy and environmentally sustainable nutrition.

Our portfolio positions¹⁶ addressing the challenge:

AstraZeneca	Biolife Solutions	Boston Scientific	Certara
Chemometec	Dechra Pharmaceuticals	IDEXX Laboratories	Lonza Group
Royalty Pharma	Ryman Healthcare	Straumann Holding	Thermo Fisher
Wuxi Biologics			



A Case Study – Boston Scientific

¹³ <https://www.who.int/news-room/fact-sheets/detail/ageing-and-health>

¹⁴ <https://ourworldindata.org/causes-of-death>

¹⁵ <https://www.un.org/sustainabledevelopment/hunger/>

¹⁶ As of 31 March 2023



Company Overview

Boston Scientific Corp. is a global leader in the development, production and marketing of innovative medical solutions. The company is active in the fields of endoscopy, interventional cardiology, neuromodulation, peripheral intervention, rhythm management, urology and pelvic health, among others.¹⁷

Positive Impact

One of the company's goals is to improve health equity and raise access to care in underrepresented communities. To that end, the company has created access opportunities, such as the Children's HeartLink Center of Excellence Collaborative, that enables knowledge sharing among pediatric heart specialists from hospitals in developing countries such as Brazil, India and Malaysia. In addition, Boston Scientific actively contributes to climate protection with its Global Energy Management System. This has not only reduced CO2 emissions by almost half between 2018 and 2022, but also increased the proportion of electricity from renewable energy sources to 76% for all production and key distribution sites at the same time. While the 100% target has already been achieved ahead of schedule in Europe and the US, Boston Scientific is on track to implement the target globally by 2024.

Potentially Adverse Impact

To reduce packaging, over 170 tons have already been removed from the waste stream and over 1,000 tons of recycled content has been used in packaging. Boston Scientific is transparent in reporting its sustainability goals. There are moderate controversies in the area of product safety and quality, as well as in the area of anti-competitive behavior. We regularly review these risks and act if changes occur.

Summary

Berenberg Net Impact Score	2.4	
Sustainable Development Goals	3	
ABC Classification	C	

Climate Change



The Challenge of Climate Change

¹⁷ https://investors.bostonscientific.com/~media/Files/B/Boston-Scientific-IR-V3/2022_Boston_Scientific_Annual_Report.pdf

Climate change is humanity's greatest challenge. Its consequences pose risks for specific sectors, companies, and countries. These include physical risks caused by natural disasters and changing weather patterns as well as more frequent and more extreme weather events, but also so-called transition risks, which relate to the ability of companies to transition to low-carbon or climate-neutral business models. In addition to the direct impacts, progressive climate change and the associated global warming have potentially significant negative effects on the achievement of the United Nations Sustainable Development Goals.

Annual greenhouse gas (GHG) emissions are now more than 50% higher than in 1990. The third part of the report by the Intergovernmental Panel on Climate Change (IPCC) published in 2022 shows that global emissions can only increase until 2025 in order to limit global warming to 1.5°C. The risks arising from climate change become even greater and potentially uncontrollable beyond the 1.5°C mark.¹⁸ While all countries experience the effects of climate change, countries that are not accountable for high emissions are often hit harder due to missing resources to withstand negative effects.¹⁹

Adding to the Solution – Our Portfolio Holdings

We recognise our responsibility to contribute to the fight against climate change through our investment decisions and collaboration with our portfolio companies and other investors. We believe that the necessary transition to a low-carbon economy also offers opportunities. For example, we welcome innovations in the renewable energy and energy efficiency sectors. Especially in industrial applications or the real estate sector, these can induce meaningful positive change. Also, new technologies that optimise the control and regulation of cooling systems in data centres or research in renewable natural gas positively contribute to mitigating climate change.

Our portfolio positions²⁰ addressing the challenge:

Energiekontor	Equinix	Greenergy Renovables	Infineon
Johns Lyng	OX2	Quanta Services	Sika
SiteOne Landscape	SSE		

¹⁸ <https://www.ipcc.ch/report/ar6/wg3/>

¹⁹ <https://ourworldindata.org/greenhouse-gas-emissions>

²⁰ As of 31 March 2023



A Case Study – OX2

Company Overview

OX2 develops and markets renewable energy solutions in the onshore wind power sector. Founded in 2004, the company is present in 11 countries in Europe and is one of the largest project developers in Europe with a sold capacity of over 1,700 MW and a project development portfolio of over 33,000 MW.²¹

Positive Impact

OX2's mission is to accelerate access to renewable energy. In this way, the company makes a direct contribution to the energy transition and climate protection. The company defines four different focus areas in its sustainability approach to make a long-term contribution. These include the establishment of a governance structure, a climate and environmental contribution, sustainable leadership roles and local engagement. Each focus group contains material topics on which regular reports are made and which are continuously updated. In addition, all solar and wind farms built should be "nature-positive" to counteract the direct impact of the farms on their environment and to enable healthy biodiversity and species diversity.²²

Potentially Adverse Impact

To reduce the negative impact of solar and wind farms on nature and biodiversity in the immediate vicinity of parks, OX2 has integrated screening processes and ecology experts into the planning process. In addition, targets are defined to ensure restoration measures to reduce overall impacts on nature so that no net loss occurs in or outside of project areas. OX2 does not face controversies relating to problematic behaviour and is not involved in any controversial business activities.

Summary

Berenberg Net Impact Score	2.6	
Sustainable Development Goals	7 & 13	 
ABC Classification	C	 

Sustainable Growth & Innovation



²¹ <https://www.ox2.com/files/mfn/72d797ae-6da2-4049-b630-9f403f228935/ox2-annual-and-sustainability-report-2022.pdf>

²² <https://www.ox2.com/sustainability/what-we-do/our-sustainability-approach/>



The Challenge of Sustainable Growth and Innovation

However, against the background of climate change and finite natural resources, economic growth needs to be environmentally sustainable while at the same time adhering to and promoting social standards such as fair and inclusive labour practices. As defined by the United Nations' Sustainable Development Goal 8, the aim is to achieve sustained, inclusive, and sustainable economic growth with full and productive employment and decent work for all.



Innovation is one of the fundamental factors when it comes to both an individual company's success and stable and sustainable economic growth. Creating and fostering corporate cultures that accelerate highly innovative ideas requires ongoing effort – yet only those companies making this effort remain economically viable and can, ultimately, solve global challenges and induce positive change.

Further, education and, in a wider sense, social enablement and empowerment are essential aspects in achieving the goal of smart, green and fair growth for the global population. Although major advancements have been made in recent decades, achieving inclusive and equitable quality education, as aimed for by the United Nations' Sustainable Development Goal 4, is still a long way off.

Contributing to the Solution – Our Portfolio Holdings

Companies offering solutions to this challenge contribute, among other things, to financial inclusion, access to and affordability of public transportation, or the reduction of dependence on non-renewable resources. Easily accessible and low-cost technologies can advance education and skills or help small businesses create jobs sustainably. Further, affordable housing and solutions that advance inclusive, sustainable cities are needed. Generally, R&D expenditure and strong innovation capabilities can lead to the development of much needed solutions.

Our portfolio positions²³ addressing the challenge:

Aalberts	Adyen	AIA Group	Antin Infrastructure
ASML	BE Semiconductor	Brookfield Asset Management	Datadog
Endava	Epiroc	HDFC	Intercontinental Exchange
Mastercard	Microsoft	Paypal	ServiceNow
Topicus	Wix.com	Wordline	 
			 

A Case Study – HDFC Bank

Company Overview

²³ As of 31 March 2023



HDFC Bank is the largest private sector bank in India as measured by balance sheet. The bank offers a comprehensive range of financial products and services to a diverse customer base. HDFC has c120,000 employees and operates in approx. 2,900 cities and towns.

Positive Impact

Rising income in India is driving the demand for financial services across income brackets and, as such, financial inclusion is crucial for India's sustained economic growth. As the nation's largest private bank and with its focus on rural and semi-urban areas, HDFC is offering financial services to the under-banked population of the country. 75% of HDFC clients come from the low- and middle-income segments. 48% of housing loans were granted to first-time home buyers.²⁴

Through dedicated programs, HDFC facilitates livelihood enhancement opportunities, particularly for women and youth, primarily in agriculture and allied areas such as dairy and poultry. The objective is to foster formal and local jobs, enhance household income and discourage migration due to economic reasons.

Potentially Adverse Impact

HDFC operates in a business, where a lack of responsible lending can lead to adverse impacts. To mitigate these risks, HDFC has dedicated policies and systems in place to address client protection. These focus, among other things, on transparency, financial literacy of customers, prevention of over-indebtedness and data privacy. Further, HDFC has an exclusion policy with regards to harmful business activities. HDFC faces some controversies relating to Governance standards, that we currently assess as moderate but monitor on a continuous basis.

Summary

Berenberg Net Impact Score	1.9	
Sustainable Development Goals	8 & 9	 
ABC Classification	B	 
Responsible Use of Resources		 

The challenge of a Responsible Use of Resources

²⁴ "Annual Report 2021-22", available at <https://www.hdfcbank.com/>.

The planet's natural resources are finite. Yet they are central to human wellbeing, as they form the basis of our health and prosperity. Over time, the global use of resources has increased, accelerated by industrialisation and globalisation. At this point, some natural resources are overexploited. This in turn threatens livelihoods and jeopardises whole ecosystems.²⁵

Numbers can give a sense of the extent of this. The global use of freshwater has increased almost sixfold since 1900 to c4trn m³ in recent years.²⁶ Globally, c367m tons of plastics were produced in 2020²⁷, but only 9% of the plastics are being recycled.²⁸

To mitigate the adverse effects of the overuse of natural resources, a drastic change of consumption and production patterns is required. Resource efficiency during production processes is often a starting point. Further, innovative technologies that decouple natural resource use and environmental impact from economic activity are needed. Measures that mitigate scarcity, reduce losses, and optimise resource management systems can positively induce change and accelerate a transition towards a circular economy.

Contributing to the Solution – Our Portfolio Holdings

Companies offering solutions to this challenge contribute, among other things, to a drastic reduction of resources used and advance their recycling capabilities.

This can, for example, include: avoiding and reducing packaging or replacing it with innovating packaging solutions; cutting the amount of food waste; and protecting and managing water as well as optimising its use. Further, sustainable solutions to treat and manage waste and new recycling technologies are much needed.

Our portfolio positions²⁹ addressing the challenge:

Alphabet

AutoStore Holdings

Lanxess

Sandvik

Waste Connections

A Case Study – Epiroc

Company Overview



²⁵ <https://www.iisd.org/articles/sustainable-use-natural-resources-governance-challenge>

²⁶ <https://ourworldindata.org/water-use-stress>

²⁷ <https://www.statista.com/topics/5401/global-plastic-waste/>

²⁸ <https://www.oecd.org/environment/plastics/>

²⁹ As of 31 March 2023



Epiroc AB is a Swedish manufacturer of excavation, construction, demolition equipment and services, as well as drilling tools. Epiroc is one of the leading companies and is present in 150 countries with over 17,000 employees.³⁰




Positive Impact

The efficient use of limited resources is essential in the fight against climate change, environmental degradation and biodiversity loss. To efficiently extract these resources, more sustainable technologies are needed for mining by companies like Epiroc AB. Epiroc's goal of a battery-powered fleet has a positive impact on the wider corporate value chain. This not only reduces the environmental footprint, but also enables a healthier working environment in the mining industry. In addition, all electrical components require less maintenance, allowing further cost savings to be realized. Replacing conventional diesel drives with battery drives will reduce the cost of ventilation for a mining operation by at least half. Epiroc has announced plans to make all its underground mining equipment available as zero-emission units by 2025.

Potentially Adverse Impact

As a supplier to the mining industry, the company is indirectly involved in pollution from the extraction of natural resources. Epiroc AB offers innovative solutions to enable more energy efficient extraction of natural resources. In addition, Epiroc AB pays attention to maintaining standards at customers and mines, as a result of which they have already parted ways with a customer with a controversial mine in Western Sahara. Epiroc does not face controversies relating to problematic behaviour and is not involved in any controversial business activities.

Summary

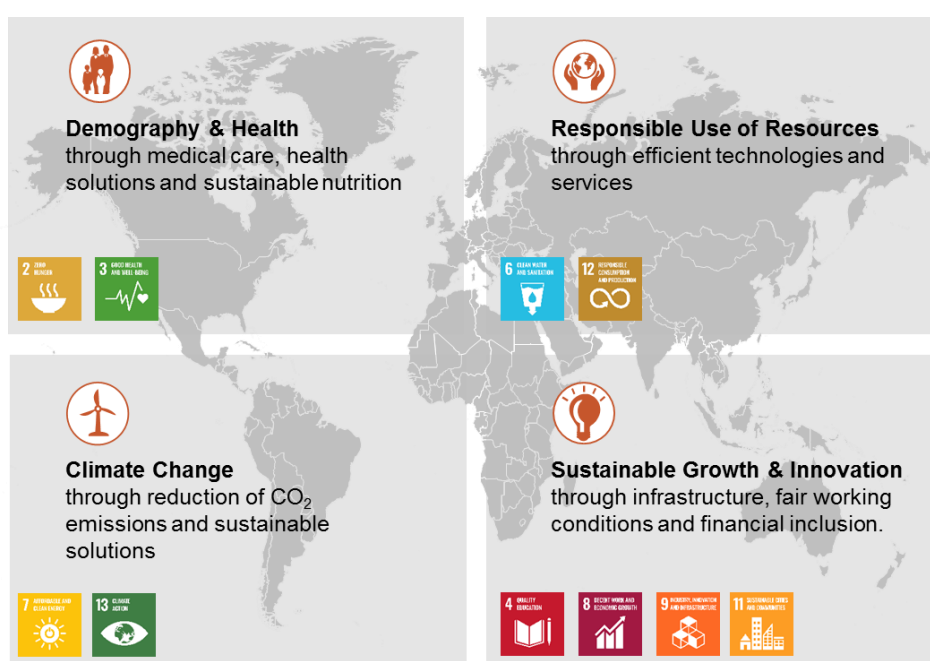
Berenberg Net Impact Score	2,2	
Sustainable Development Goals	12	
ABC Classification	B	

The Sustainable Development Goals (SDGs)

³⁰ <https://www.epirocgroup.com/content/dam/epiroc/corporate/documents/investors/annual-report/annual-report-2023/Epiroc%20Annual%20and%20Sustainability%20Report%202022.pdf>

Confirmed by the findings of our survey from 2018³¹ and its updates from 2021³² and 2022³³, we identified the SDGs that are investible as well as important. Based on these findings, we defined the four key global challenges Demography and Health, Climate Change, Sustainable Growth and Innovation and Responsible Use of Resources. These challenges are at the heart of our approach to impact.

An additional part of our impact framework is the mapping of our portfolio holdings with respect to their contribution to some of the SDGs. As a first step, we assigned 10 investible SDGs to our four core global challenges, as per the graphic below.³⁴



The four global challenges and the SDGs
Source: Berenberg

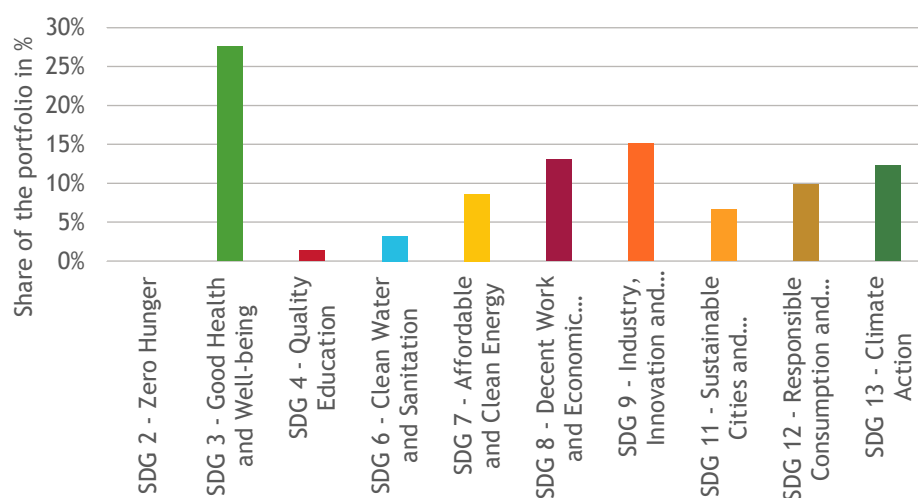
In a second step, we mapped our portfolio holdings to the respective SDGs of the specific global challenge (see step one). Based on its primary contribution, each portfolio position is assigned to 1-3 of the SDGs. We show portfolio weights alongside the respective SDGs – if an investment contributes to several SDGs, the portfolio weight is allocated proportionately:

³¹ See Berenberg Wealth & Asset Management Study “Understanding the SDGs in Sustainable Investing”, available at www.berenberg.de/en/esg-publications.

³² See Berenberg Wealth & Asset Management Study “Berenberg ESG Survey: Exploring investor sentiment”, available at www.berenberg.de/en/esg-publications.

³³ See Berenberg Wealth & Asset Management Study “Berenberg ESG Survey: SDG and Climate Investing – Exploring Investor Sentiment”, available at www.berenberg.de/en/esg-publications.

³⁴ An overview of all SDGs can be found in the appendix.

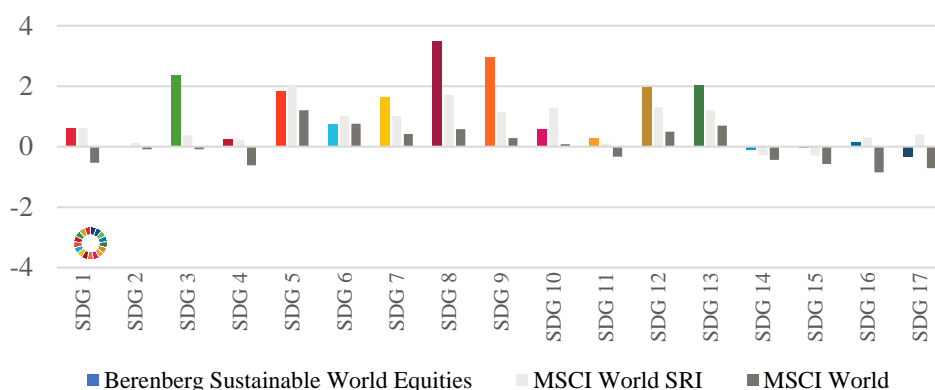


The portfolio holdings mapped to the SDGs as per March 31st of 2023

Source: Berenberg

Finally, as an additional view on the fund holding's contribution to the SDGs, we compare the so-called "SDG Net Alignment Scores" of the fund with its regular benchmark as well as a sustainability index. We use SDG Net Alignment Scoring data from an external data provider MSCI ESG and combine this with our own Net Impact Score data for both, the fund as well as the benchmarks. For constituents within the benchmarks that are not covered by our internal analysis, we only use data from the external provider. All constituents within our fund, on the other hand, are part of our internal analysis and are hence analysed with both methodologies.

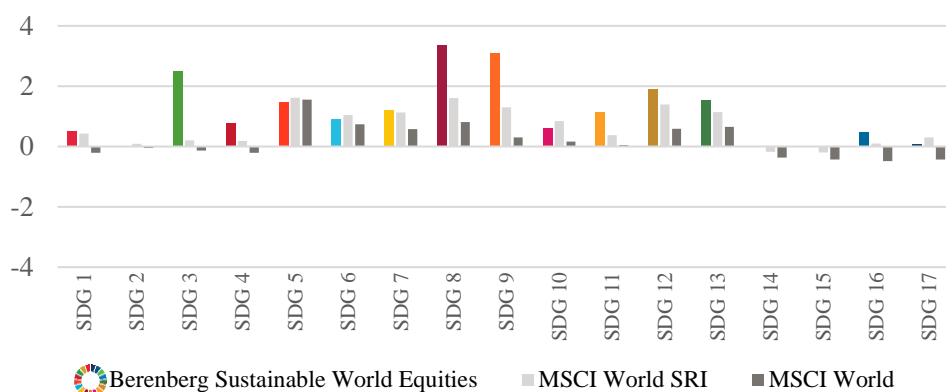
The graph shows the fund's relative positive SDG net alignment compared to that of the respective benchmark. It is important to note that the two methodologies, namely our own as well as the external data providers', are not identical and we do not have full visibility on the full set of raw data of our external data provider. However, both approaches are based on a similar approach of considering positive and negative contributions and scoring those respectively. We hence believe this to be a further valuable indication of the fund's performance when it comes to the SDGs.



Q1 2023

MSCI Net Alignment of SDG Scores compared to benchmark and sustainability index

Source: MSCI ESG, own calculations and presentation. Certain information © 2023 MSCI ESG Research LLC. Reproduced by permission. Portfolio as of 31 March 2023. MSCI Data as of 30 June 2023.



Q1 2022

MSCI Net Alignment of SDG Scores compared to benchmark and sustainability index

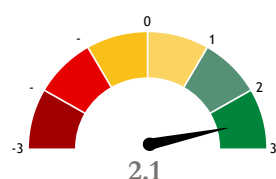
Source: MSCI ESG, own calculations and presentation. Certain information © 2022 MSCI ESG Research LLC. Reproduced by permission. Portfolio as of 31 March 2022. MSCI Data as of 30 June 2022.

Additional ESG and Impact-Related Information

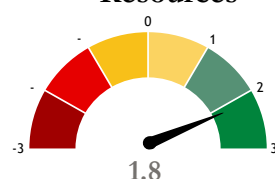
Average Net Impact Score per Global Challenge

Additional to the portfolio level as shown within our “Spotlights” section, we measure and showcase the average Berenberg Net Impact Score per global challenge.

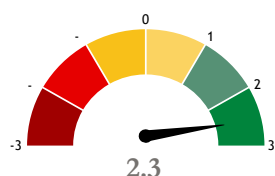
Demography & Health



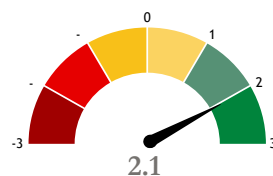
Responsible Use of Resources



Climate Change



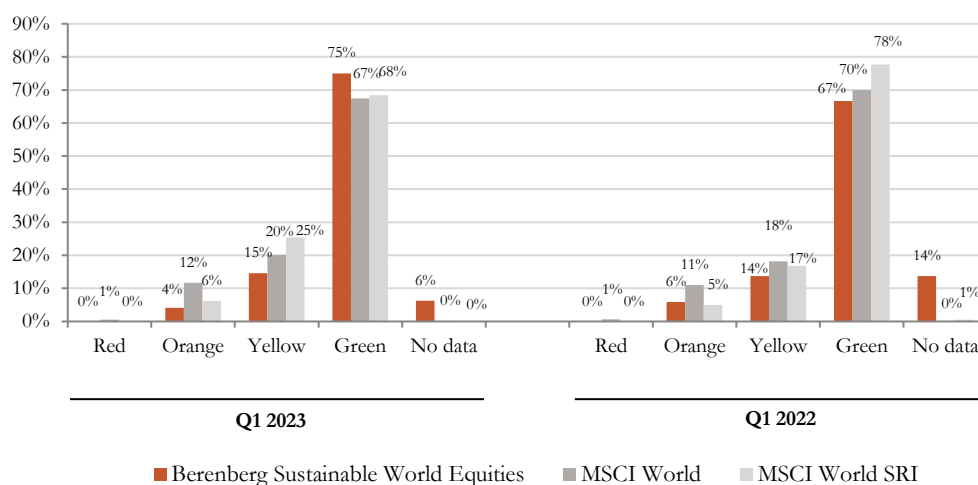
Sustainable Growth & Innovation



Source: Berenberg

ESG Controversies Screen

Investments in the fund are monitored for ESG controversies and, with the help of MSCI ESG data, flagged according to their severity. We compare this with the regular benchmark and with a sustainability index.

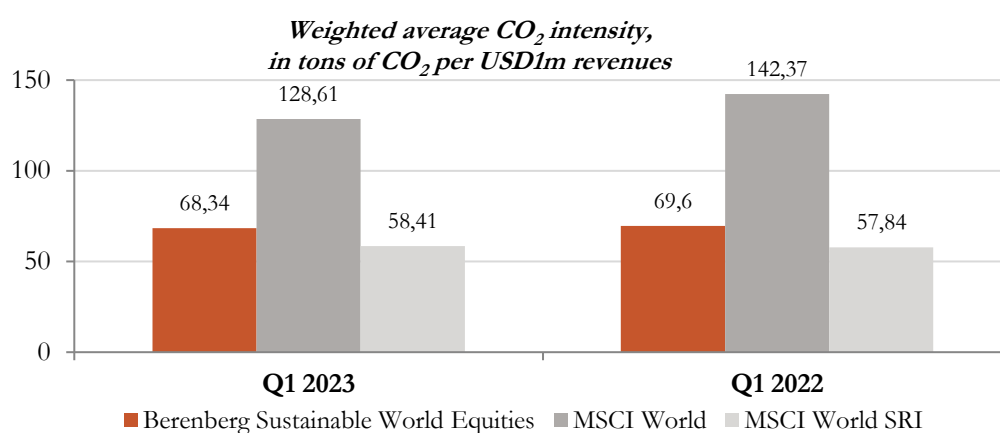


Source: MSCI ESG, own calculations and presentation. Certain information © 2023 MSCI ESG Research LLC. Reproduced by permission.

CO₂ Intensity

While the fund does not specifically target to minimize its carbon intensity, we recognize the importance of our companies' carbon exposure and climate impact, which is also why we explicitly incorporate the introduced *Carbon Assessment* pillar in our proprietary Berenberg Net Impact Model.

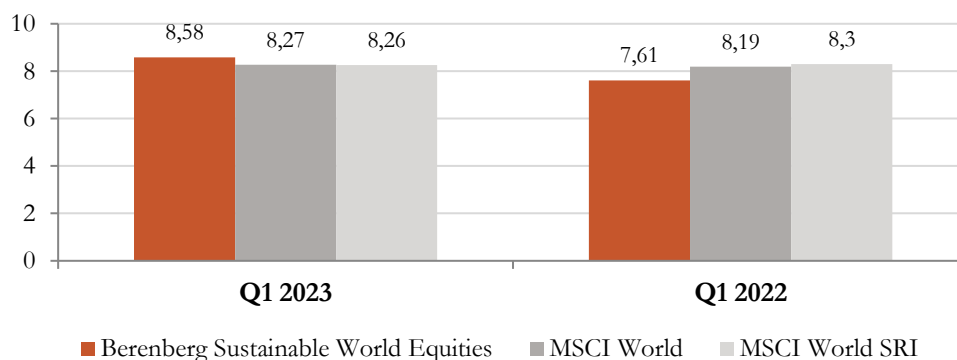
Emissions data such as CO₂ intensity are relevant parameters which can be used to assess the efficient management of a company and the extent of transition risks. We compare this with the regular benchmark MSCI World and the sustainability index MSCI World SRI.



Source: MSCI ESG, own calculations and presentation. Certain information © 2023 MSCI ESG Research LLC. Reproduced by permission.

ESG Score

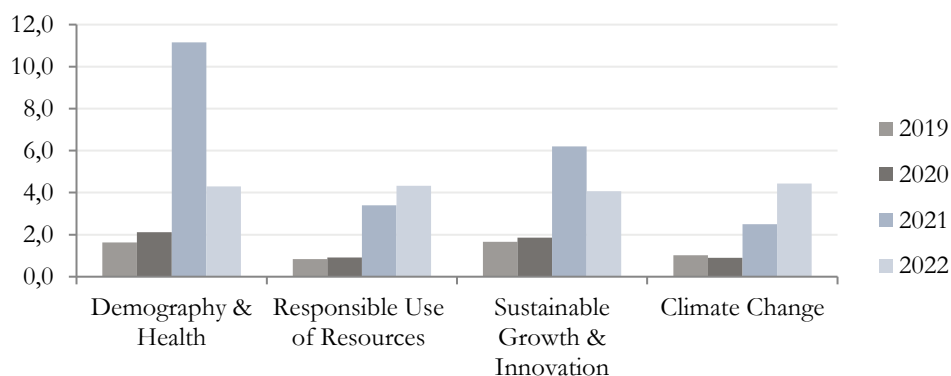
Using a score between 0 (lowest) and 10 (highest), MSCI ESG assesses the ability of portfolio holdings to identify and manage environmental, social and governance-related risks compared to peers. These ESG scores translate into ESG ratings from AAA-CCC at holding level and are aggregated at the portfolio level. Finally, the aggregated ESG Score is adjusted based on the portfolio's exposure to holdings with positive and negative ESG rating trends as well as exposure to holdings within the lowest two ESG rating categories. We compare this with the regular benchmark and a sustainability index.



Source: MSCI ESG, own calculations and presentation. Certain information © 2023 MSCI ESG Research LLC. Reproduced by permission.

Revenue Exposure

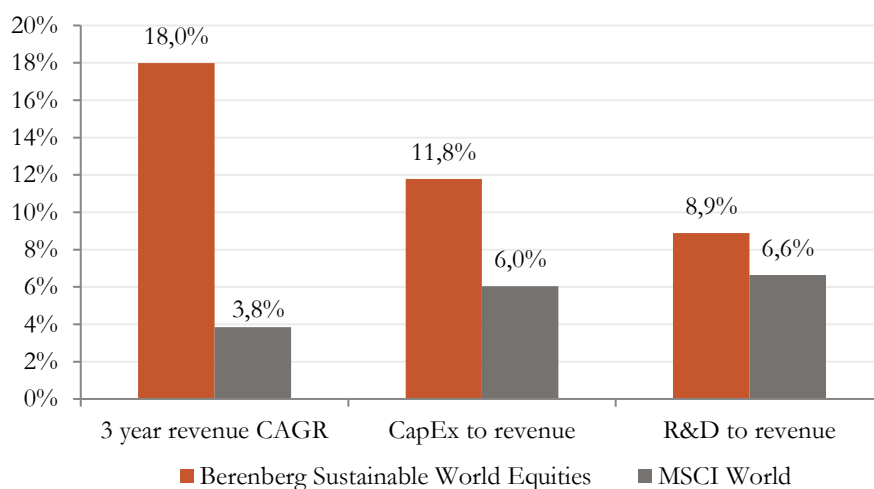
We analyse the revenue exposure of the portfolio companies to the four global challenges. For this, we allocate the companies' revenues proportionately to the respective challenge. We showcase the aggregated added value through products and services provided by our portfolio holdings per key structural theme in million euros over time.



Source: Bloomberg, own calculations and presentation.

Sustainability Key Performance Indicators

Sustainability indicators are used to gauge a company's financial viability and long-term profitability as well as how the business is achieving this profitability in a non-harmful and ultimately positive way. The companies held by the fund demonstrated significantly higher growth rates over the past three years, higher investments (capex) and R&D expenditures, compared to the companies in the benchmark. As a result, there is a greater opportunity for constituent companies to add value to the environment and society.

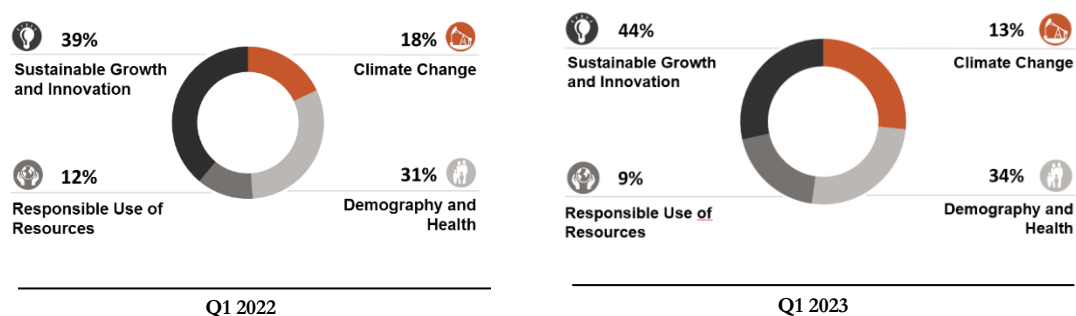


Source: Bloomberg, own calculations and presentation.



The Four Global Challenges

As presented earlier in the report, every portfolio position contributes to the solution of one of the four defined global challenges within our impact framework. Here we present the share of investments within the challenges over time.



Source: Berenberg.

Top Five Holdings

For the top five holdings by weight, we report sustainability-related indicators.

Company	Weight	Controversy Flag	Net Impact Score	SDG
Microsoft	8%	Yellow	1.3	SDG 8, SDG 9
ServiceNow	7%	Green	2.5	SDG 8, SDG 9
Mastercard	5%	Yellow	1.9	SDG 8 SDG 9
Boston Scientific	5%	Yellow	2.4	SDG 3
Royalty Pharma	5%	Green	1.8	SDG 3

Portfolio as of 31 March 2023.

Progress and Outlook

We aim to constantly review our methodology to improve our Berenberg Net Impact Model, to increase its objectivity and clarity and to align it with best-practice standards. We will keep developing the Berenberg Net Impact Model, taking into account the evolving landscape of impact-related data providers and numerous impact measurement initiatives.

We also closely watch market, regulatory and academic developments in the impact measurement space. For example, we are excited to see how the EU taxonomy for sustainable activities will influence impact measurement practice and will dynamically react to upcoming best-practice standards.

Appendix

1. Methodology

Below, we detail our methodology to calculate mentioned parameters.

Chapter “Spotlights”

Four Global Challenges

The proportion of each key structural theme in the fund is calculated through the total percentage-weighted portfolio share of the companies that primarily address each key challenge.

The ABC Model

Depending on the relevant business activity, each of the fund’s holdings is classified to one of the three categories “Act to avoid harm” (A), “Benefit stakeholders” (B) or “Contribute to solutions” (C). We show the share of the portfolio holdings within each category.

The Sustainable Development Goals (SDGs)

In a first step, we set a framework in which we assigned 10 investible SDGs to our four core global challenges. In a second step, depending on the relevant business activity, each of the fund’s holdings is mapped to the SDGs of the respective specific global challenge that the holding addresses. Based on its primary contribution, each investment is assigned 1-3 goals. Portfolio weights are shown along with the respective SDGs – in the case of investments that contribute to several SDGs, the portfolio weight is allocated proportionately.

Chapter “Additional ESG and Impact-Related Information”

ESG Controversies Screen

MSCI ESG analyses controversial business practices in the five areas Environment, Human rights, Labour rights and Supply chain, Customers as well as Governance. The controversies are rated according to their reputational risk as well as the operational handling by a flagging system. Green indicates no or weak controversies, yellow indicates moderate controversies, orange indicates severe controversies and red indicates very severe controversies. We show the share of the portfolio holdings within each controversy flag. This is compared to the benchmark.

CO₂ Intensity

The CO₂ intensity per company (Scopes 1 and 2) is multiplied by the portfolio weight of the company (current value of the investment divided by current fund value) and summed up. This weighted average CO₂ intensity provides an indication of the portfolio's exposure to CO₂ emission-intensive companies.

The calculation of emissions data is based on indicators recommended by the G20's Task Force on Climate-related Financial Disclosures (TCFD).

ESG Score

Using a score between 0 (lowest) and 10 (highest), MSCI ESG assesses the ability of portfolio holdings to identify and manage environmental, social and governance-related risks compared to peers. This score is aggregated at the portfolio level and compared to the benchmark.

Revenue Exposure

The turnover of each portfolio company is allocated to the key structural themes on a percentage basis, multiplied by the share held by the fund's constituents and summed up accordingly for the fund. This is provided in absolute euro values.

Sustainability Key Performance Indicators

- *Three-year revenue CAGR:* The sales growth rate over the past three fiscal years is calculated for each company, weighted by portfolio share and summed up.
- *Capex to revenue:* Capex is set in relation to the company's revenues, weighted according to portfolio share and summed up.
- *R&D to revenue:* R&D expenditure is set in relation to the company's sales, weighted according to portfolio share and summed up.



2. Sustainable Development Goals (SDGs)

- SDG 1 – No Poverty
- SDG 2 – Zero Hunger
- SDG 3 – Good Health and Well-being
- SDG 4 – Quality Education
- SDG 5 – Gender Equality
- SDG 6 – Clean Water and Sanitation
- SDG 7 – Affordable and Clean Energy
- SDG 8 – Decent Work and Economic Growth
- SDG 9 – Industry, Innovation and Infrastructure
- SDG 10 – Reduced Inequality
- SDG 11 – Sustainable Cities and Communities
- SDG 12 – Responsible Consumption and Production
- SDG 13 – Climate Action
- SDG 14 – Life Below Water
- SDG 15 – Life on Land
- SDG 16 – Peace, Justice and Strong Institutions
- SDG 17 – Partnership to achieve the Goals



BERENBERG

PARTNERSHIP SINCE 1590

